



JTG-300E

ECONOMICAL TIG/ARC WELDING MACHINE

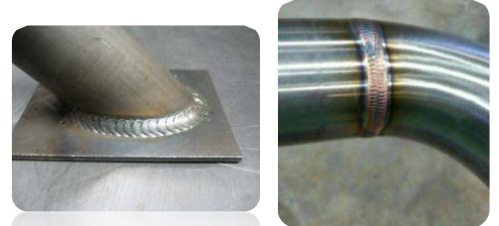
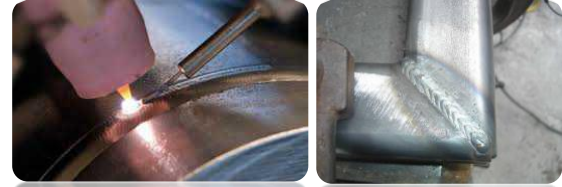


50/60
Hz

3
Phase

FEATURES

- Dual-function welder: DC TIG & MMA function.
- Industrial purpose IGBT dual-module and heavy-duty cycle.
- Digital control technology, accurate welding power control.
- With HF TIG arc starting, allows to strike the arc easily with high frequency and make it easy to establish an arc under a variety of conditions
- High-frequency arc start with a high success rate.
- Peak current & time, base current & time adjustable



Technical Specification

	UNIT	JTG-300E
Input Voltage	V	AC 380V±10%
Frequency	Hz	50/60
Phase		Three
ARC Starting	Type	HF
Open Circuit Voltage	V	56
Input Power Capacity	kVA	8.4
Current Range TIG	A	10-300
Current Range MMA	A	10-280
Rated Output Voltage	V	20
Pre Flow Time	Sec	0.1-10
Post Flow Time	Sec	0-10
Down Slope	Sec	0-15
Balance		15-85
Duty Cycle at (40 °C)	%	60
Efficiency	%	85
Power factor	cos	0.93
Degree of Protection	Class	IP21S
Insulation Grade		H
Weight	kg	10