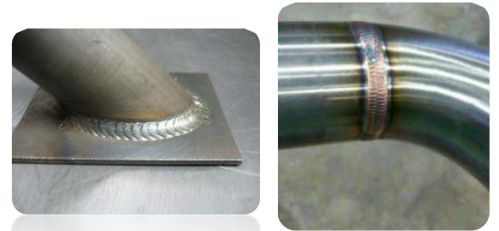
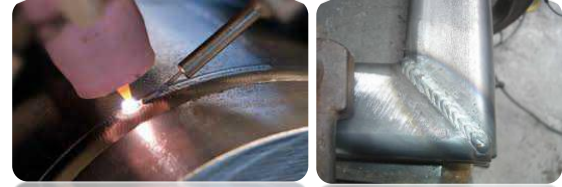




JTG-250 , AC/DC PULSE TIG WELDING MACHINE

1
Phase

50/60
Hz



JTG-250 AC/DC

FEATURES

- The first choice for thin materials
- Multi-function welding machine -AC TIG,AC pulsed TIG,DC TIG,DC pulsed TIG,MMA
- Advance Inverter Technology
- Auto protection of over-voltage and over-current
- Portable and Lightweight design presents rugged exterior and a flip down visor to protect panel from burns and damage
- Combination of AC and DC TIG permit deep penetration and significantly cut down electrode consumption
- Adjustable slop up/down, Gas Pre-flow and Post-flow control for maximum shielding gas protection before and after the weld
- Capable for different shapes welding, like butt-joint, corner joint, T-joint,lap-joint and cruciform joint
- Pulsed function for Aluminium welding.

Technical Specification

	UNIT	JTG-250 ACDC
Input Voltage	V	220V±10%
Frequency	Hz	50/60
Phase		Single
ARC Starting	Type	HF
Open Circuit Voltage	V	56
Input Power Capacity	kVA	4.5
Current Regulating Range	A	10-250
Rise time	Sec	0-10
Delay times	Sec	1-10
Fall times	Sec	0-10
Pre Gas Flow	Sec	0-2
Duty Cycle at (40 °C)	%	60
Efficiency	%	85
Power factor	cos	0.93
Degree of Protection	Class	IP21S
Insulation Grade		F
Weight	kg	30.4